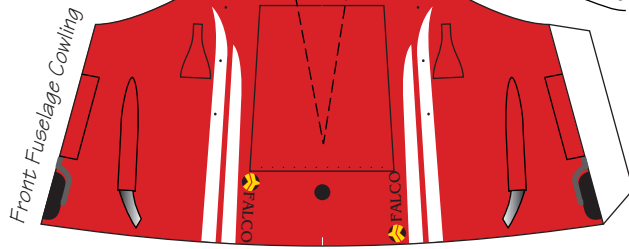


Wing top mid section cover

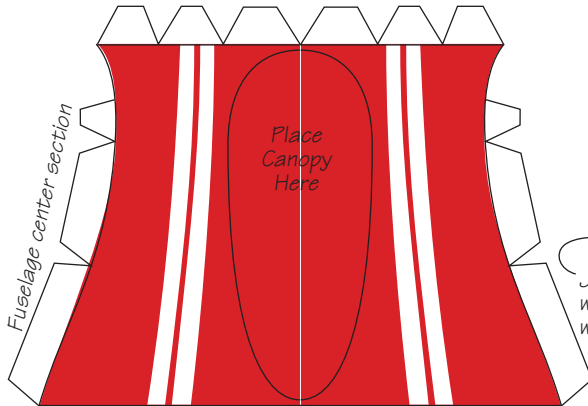


Front Fuselage Cowl

Curl up this piece and glue on top of front cowl



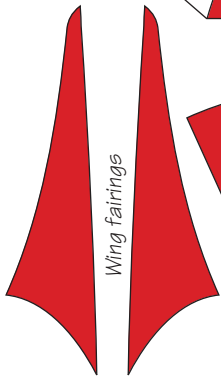
Wing Bottom



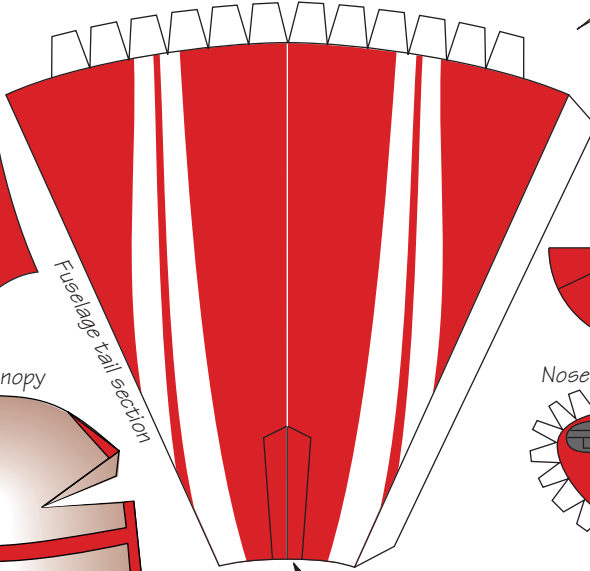
Fuselage center section

Join wing halves with tab

Paste wing mid section piece on top of wing.

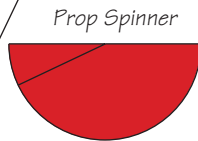


Wing fairings

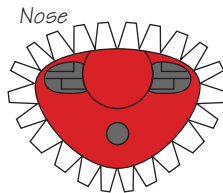


Canopy

Fuselage tail section



Prop Spinner

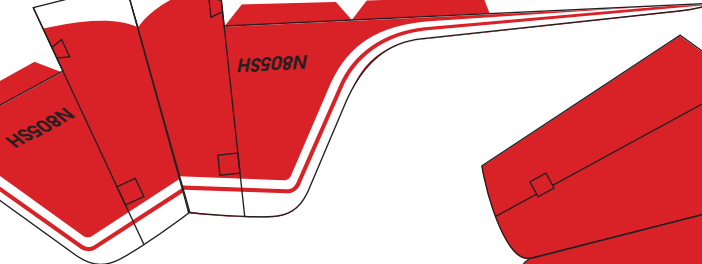


Nose

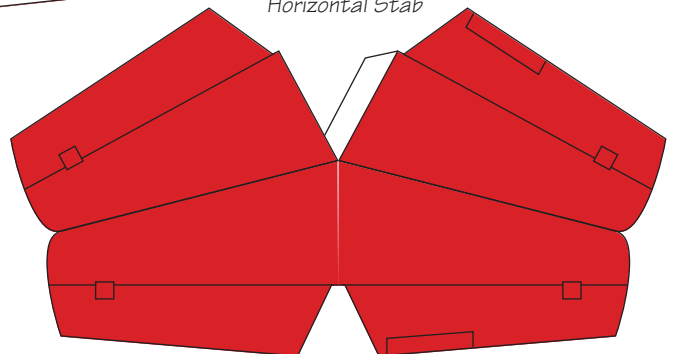
Fold tabs in to support horz. stab

Vertical Stabilizer

Bend tabs out



Horizontal Stab



F.8L Falco



Sequoia Aircraft Corporation

Drawn by Ernie Brock